

HELICOPTER PROCEDURES

WITHIN

BANGKOK CONTROL ZONE

DEPARTURE AND ARRIVAL POINT

- DONMUAENG AIRPORT
- TPAD
- 11TH INFANTRY (BANGKHEN)
- CAV PAD AND HELIPADS IN BANGKOK CITY
- KLONGLUANG

DEPARTURE AND ARRIVAL DIRECTION

- RUNWAY 21
- RUNWAY 03

Refer from DONMUAENG Airport

DEP/ARR DONMUAENG RUNWAY 21

ROUTE

- DONMUAENG – AYUTTAYA
- DONMUAENG – WANGNOI
- DONMUAENG – HINKONG
- DONMUAENG – ONGKARAK
- DONMUAENG – BANGNAMPREAW
- DONMUAENG – BANGPAKONG
- DONMUAENG – SAMUTSAKORN
- DONMUAENG – BANGYAI

20 NM WEST
(OUTBOUND)

--- STANDARD ROUTE
DONMUAENG TOWER FREQ 118.1 MHz

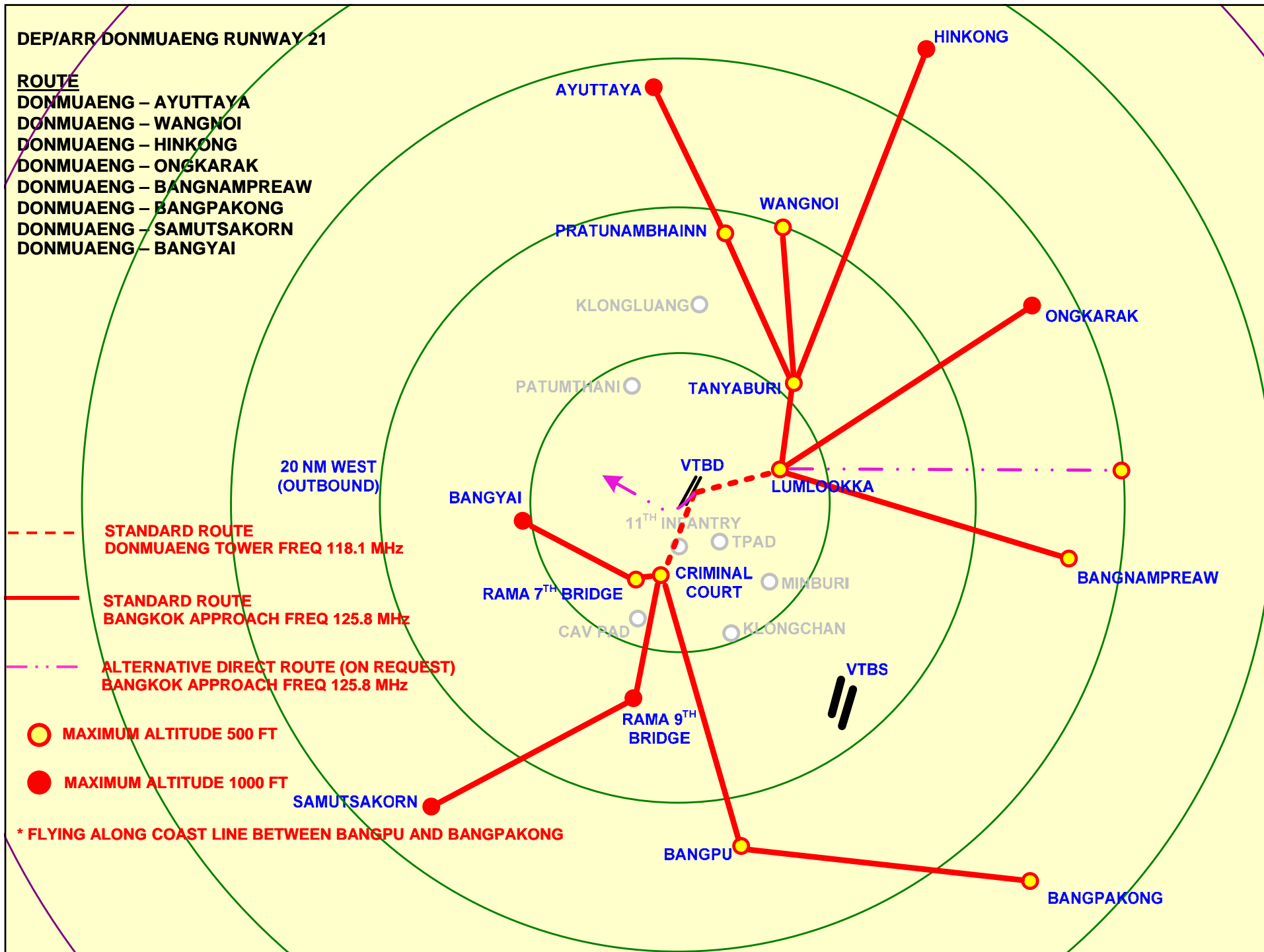
— STANDARD ROUTE
BANGKOK APPROACH FREQ 125.8 MHz

- · - · - ALTERNATIVE DIRECT ROUTE (ON REQUEST)
BANGKOK APPROACH FREQ 125.8 MHz

○ MAXIMUM ALTITUDE 500 FT

● MAXIMUM ALTITUDE 1000 FT

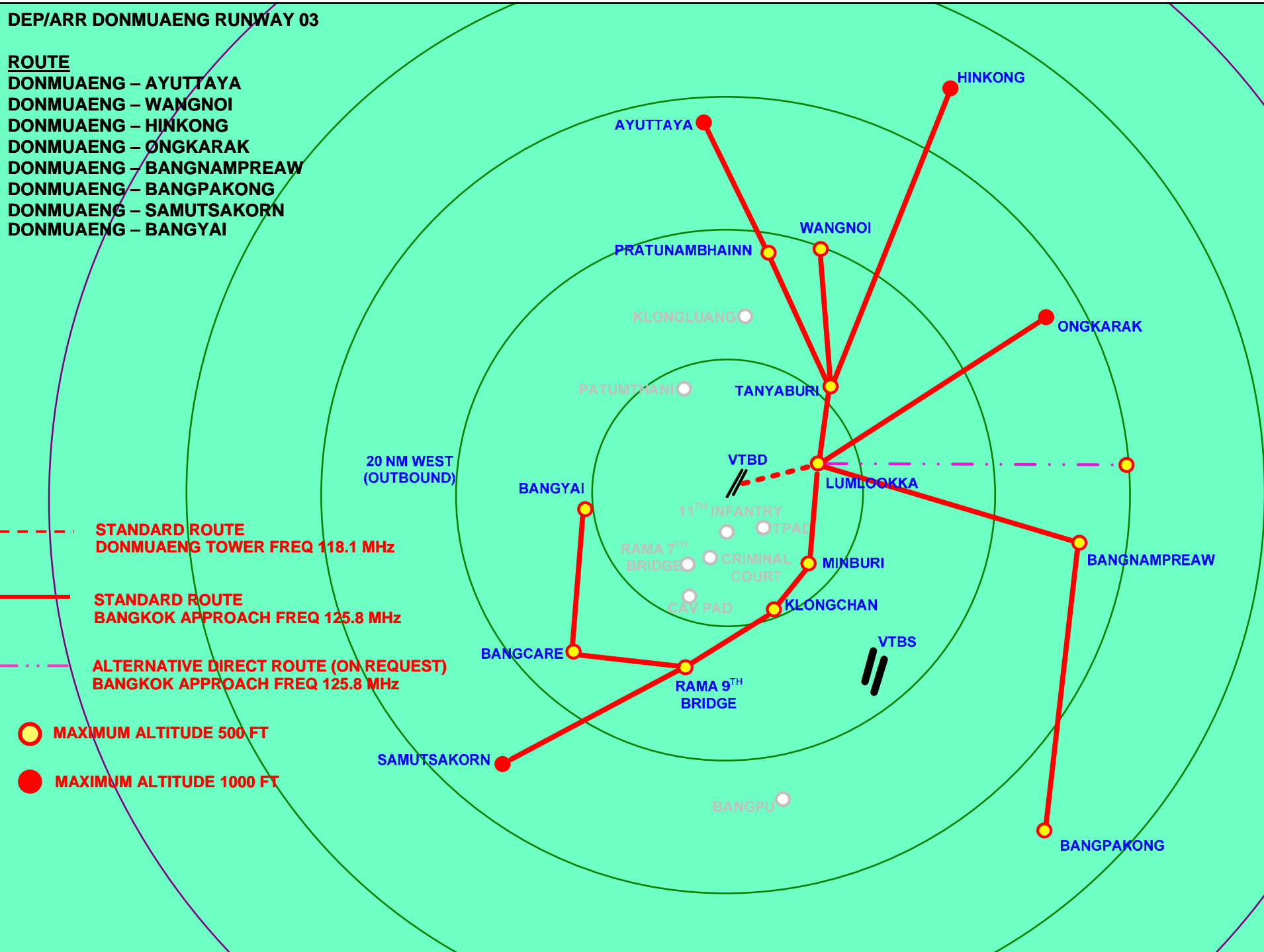
* FLYING ALONG COAST LINE BETWEEN BANGPU AND BANGPAKONG



DEP/ARR DONMUAENG RUNWAY 03

ROUTE

- DONMUAENG – AYUTTAYA
- DONMUAENG – WANGNOI
- DONMUAENG – HINKONG
- DONMUAENG – ONGKARAK
- DONMUAENG – BANGNAMPREAW
- DONMUAENG – BANGPAKONG
- DONMUAENG – SAMUTSAKORN
- DONMUAENG – BANGYAI



20 NM WEST
(OUTBOUND)

--- STANDARD ROUTE
DONMUAENG TOWER FREQ 118.1 MHz

— STANDARD ROUTE
BANGKOK APPROACH FREQ 125.8 MHz

- . - . ALTERNATIVE DIRECT ROUTE (ON REQUEST)
BANGKOK APPROACH FREQ 125.8 MHz

○ MAXIMUM ALTITUDE 500 FT

● MAXIMUM ALTITUDE 1000 FT

DEP/ARR TPAD RUNWAY 21

ROUTE

- TPAD – AYUTTAYA
- TPAD – WANGNOI
- TPAD – HINKONG
- TPAD – ONGKARAK
- TPAD – BANGNAMPREAW
- TPAD – BANGPAKONG
- TPAD – SAMUTSAKORN
- TPAD – BANGYAI

--- STANDARD ROUTE
DONMUAENG TOWER FREQ 118.1 MHz

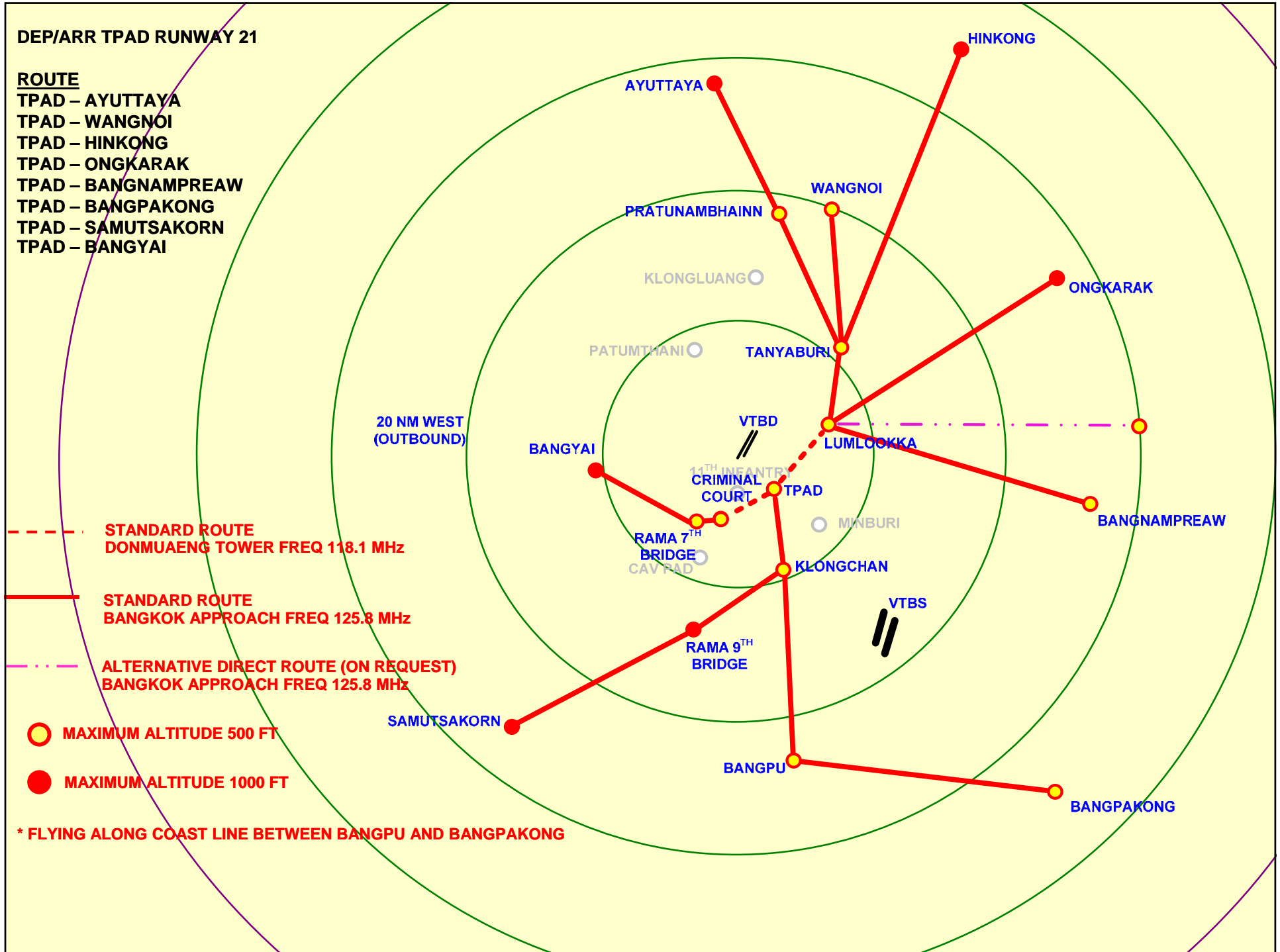
— STANDARD ROUTE
BANGKOK APPROACH FREQ 125.8 MHz

-.-.- ALTERNATIVE DIRECT ROUTE (ON REQUEST)
BANGKOK APPROACH FREQ 125.8 MHz

○ MAXIMUM ALTITUDE 500 FT

● MAXIMUM ALTITUDE 1000 FT

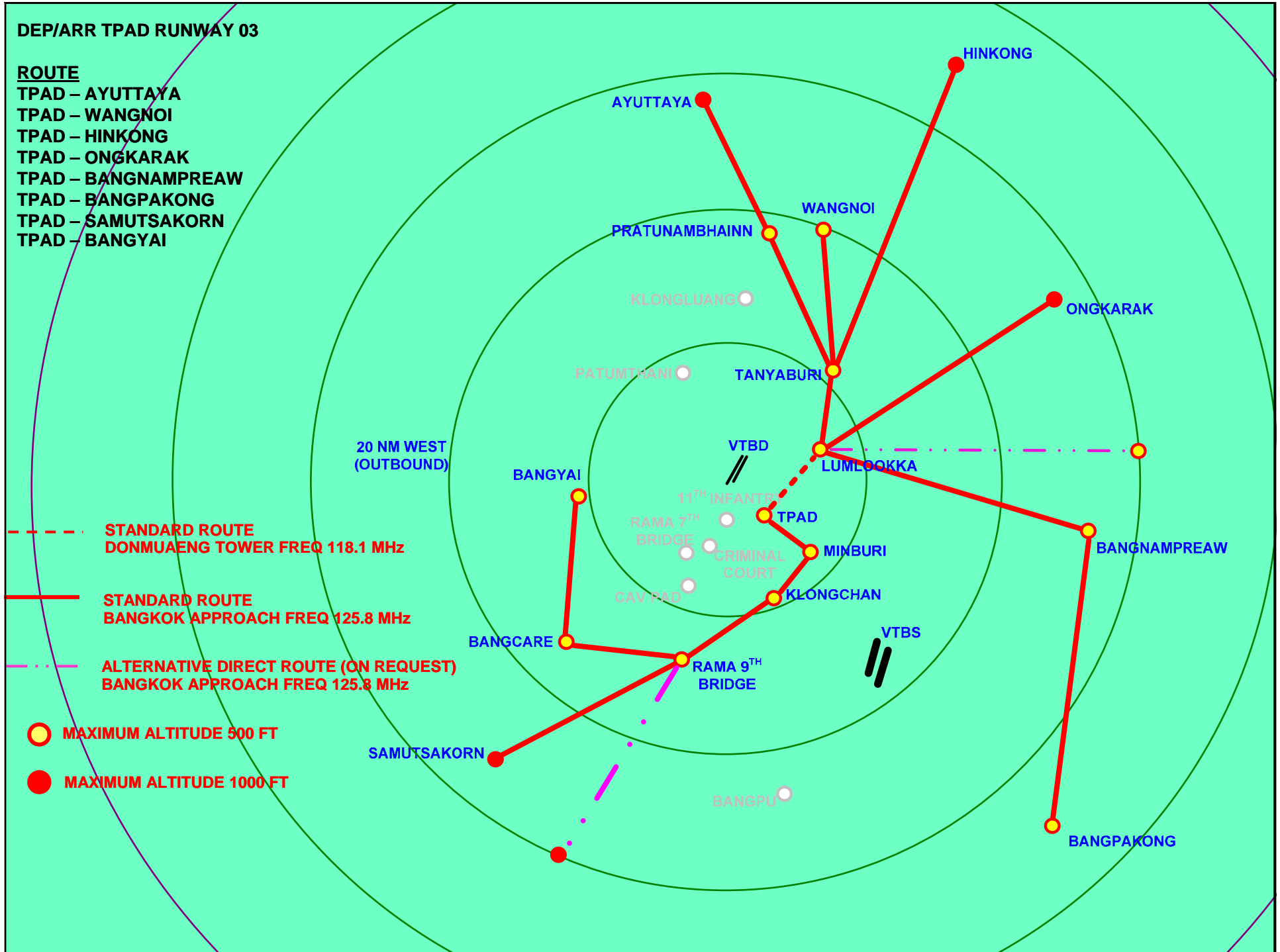
* FLYING ALONG COAST LINE BETWEEN BANGPU AND BANGPAKONG



DEP/ARR TPAD RUNWAY 03

ROUTE

- TPAD – AYUTTAYA
- TPAD – WANGNOI
- TPAD – HINKONG
- TPAD – ONGKARAK
- TPAD – BANGNAMPREAW
- TPAD – BANGPAKONG
- TPAD – SAMUTSAKORN
- TPAD – BANGYAI



20 NM WEST
(OUTBOUND)

STANDARD ROUTE
DONMUAENG TOWER FREQ 118.1 MHz

STANDARD ROUTE
BANGKOK APPROACH FREQ 125.8 MHz

ALTERNATIVE DIRECT ROUTE (ON REQUEST)
BANGKOK APPROACH FREQ 125.8 MHz

○ MAXIMUM ALTITUDE 500 FT

● MAXIMUM ALTITUDE 1000 FT

AYUTTAYA

HINKONG

WANGNOI

PRATUNAMBHAINN

ONGKARAK

KLONGLUANG

PATUMTHANI

TANYABURI

VTBD

LUMLOKKA

BANGYAI

11TH INFANTRY

RAMA 7TH BRIDGE

TPAD

MINBURI

BANGNAMPREAW

CRIMINAL COURT

CAV PAD

KLONGCHAN

VTBS

BANGCARE

RAMA 9TH BRIDGE

SAMUTSAKORN

BANGPU

BANGPAKONG

**DEP/ARR 11TH INFANTRY
(BANGKHEN) RUNWAY 21**

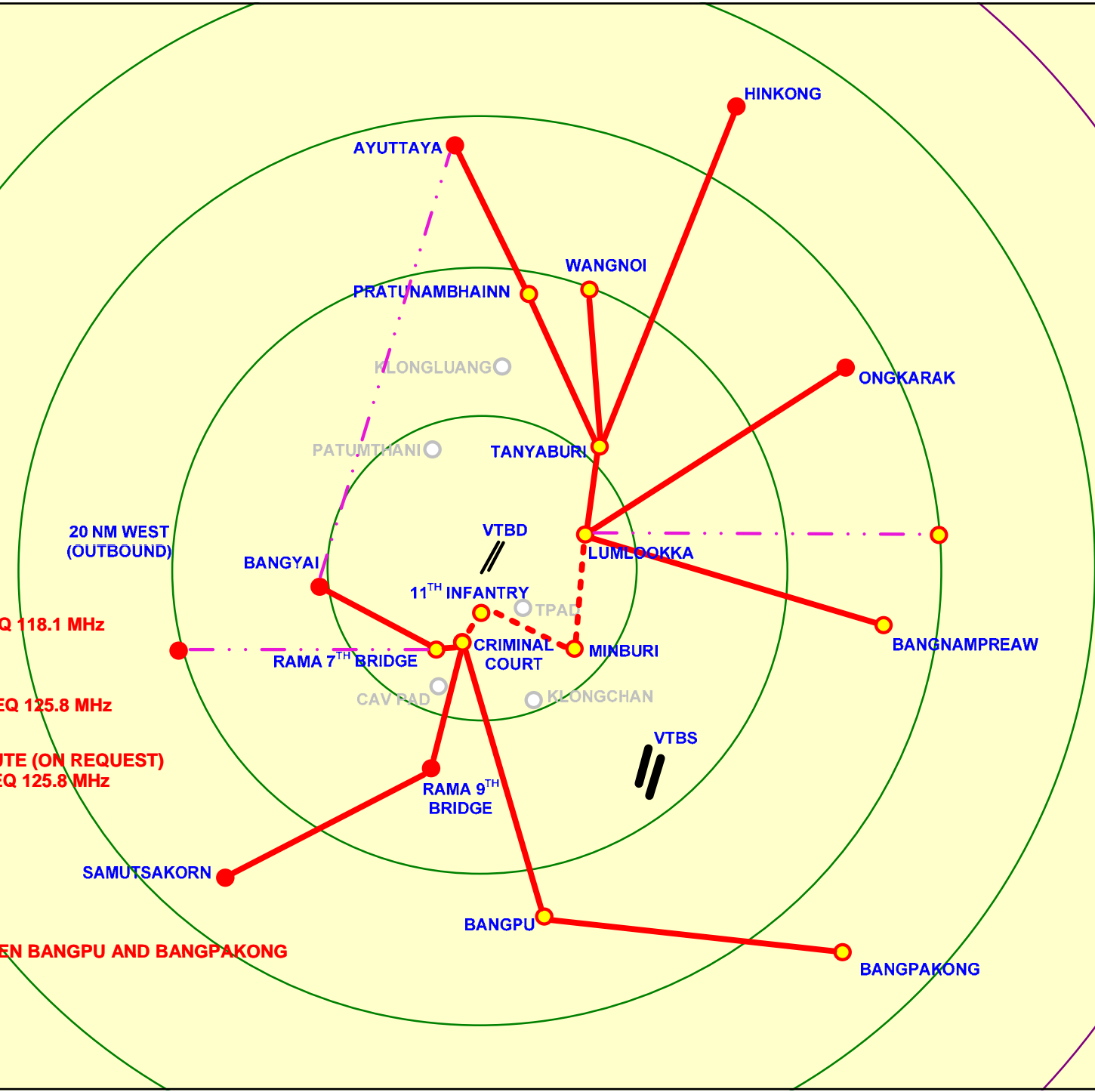
ROUTE

- BANGKHEN – AYUTTAYA
- BANGKHEN – WANGNOI
- BANGKHEN – HINKONG
- BANGKHEN – ONGKARAK
- BANGKHEN – BANGNAMPREAW
- BANGKHEN – BANGPAKONG
- BANGKHEN – SAMUTSAKORN
- BANGKHEN – BANGYAI

- - - - - STANDARD ROUTE
DONMUAENG TOWER FREQ 118.1 MHz
- STANDARD ROUTE
BANGKOK APPROACH FREQ 125.8 MHz
- · - · - ALTERNATIVE DIRECT ROUTE (ON REQUEST)
BANGKOK APPROACH FREQ 125.8 MHz

- MAXIMUM ALTITUDE 500 FT
- MAXIMUM ALTITUDE 1000 FT

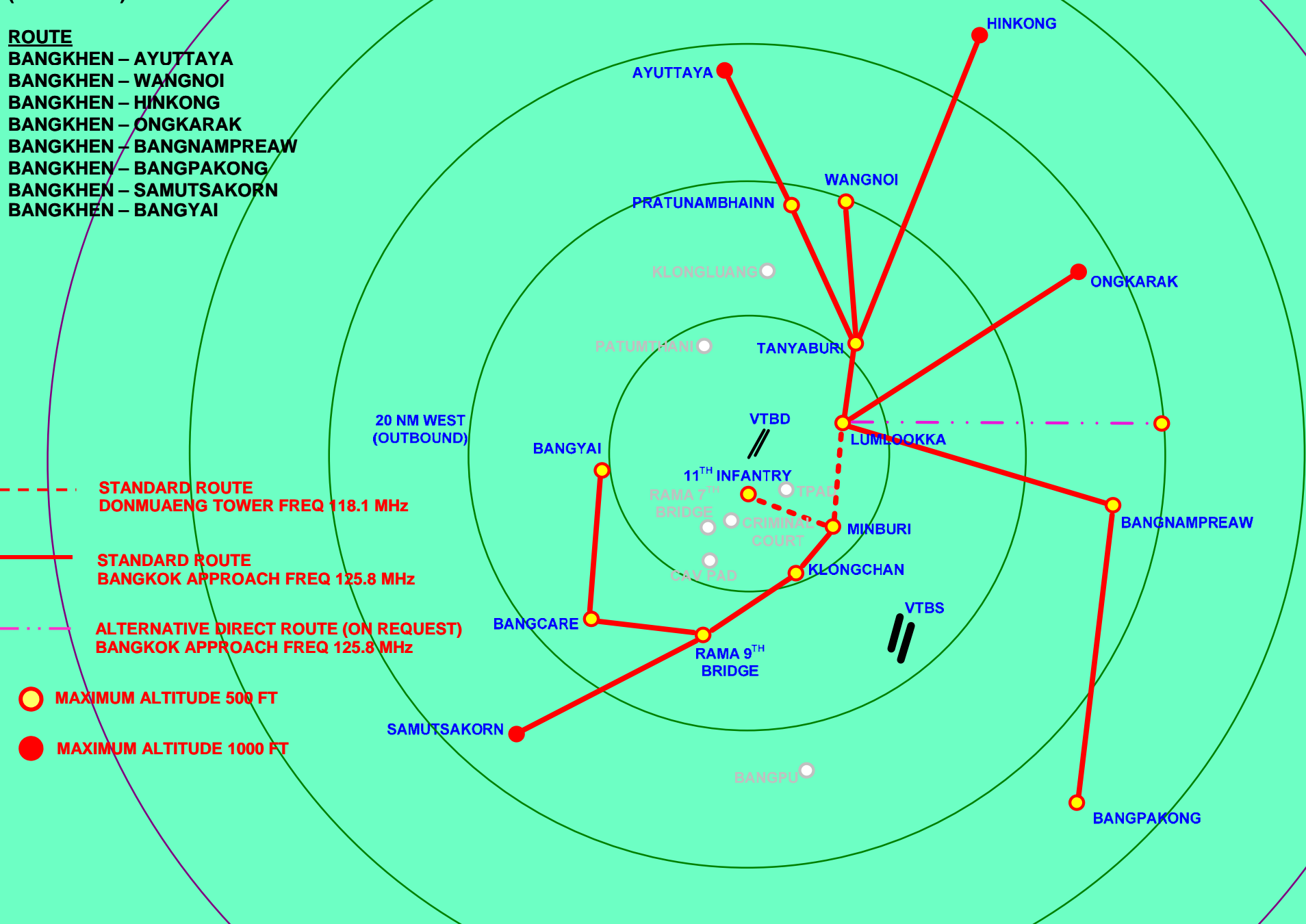
* FLYING ALONG COAST LINE BETWEEN BANGPU AND BANGPAKONG



**DEP/ARR 11TH INFANTRY
(BANGKHEN) RUNWAY 03**

ROUTE

- BANGKHEN – AYUTTAYA
- BANGKHEN – WANGNOI
- BANGKHEN – HINKONG
- BANGKHEN – ONGKARAK
- BANGKHEN – BANGNAMPREAW
- BANGKHEN – BANGPAKONG
- BANGKHEN – SAMUTSAKORN
- BANGKHEN – BANGYAI



DEP/ARR BANGKOK RUNWAY 21

ROUTE

- BANGKOK – AYUTTAYA
- BANGKOK – WANGNOI
- BANGKOK – DONMUAENG
- BANGKOK – HINKONG
- BANGKOK – ONGKARAK
- BANGKOK – BANGNAMPREAW
- BANGKOK – BANGPAKONG
- BANGKOK – SAMUTSAKORN
- BANGKOK – BANGYAI

--- STANDARD ROUTE
DONMUAENG TOWER FREQ 118.1 MHz

— STANDARD ROUTE
BANGKOK APPROACH FREQ 125.8 MHz

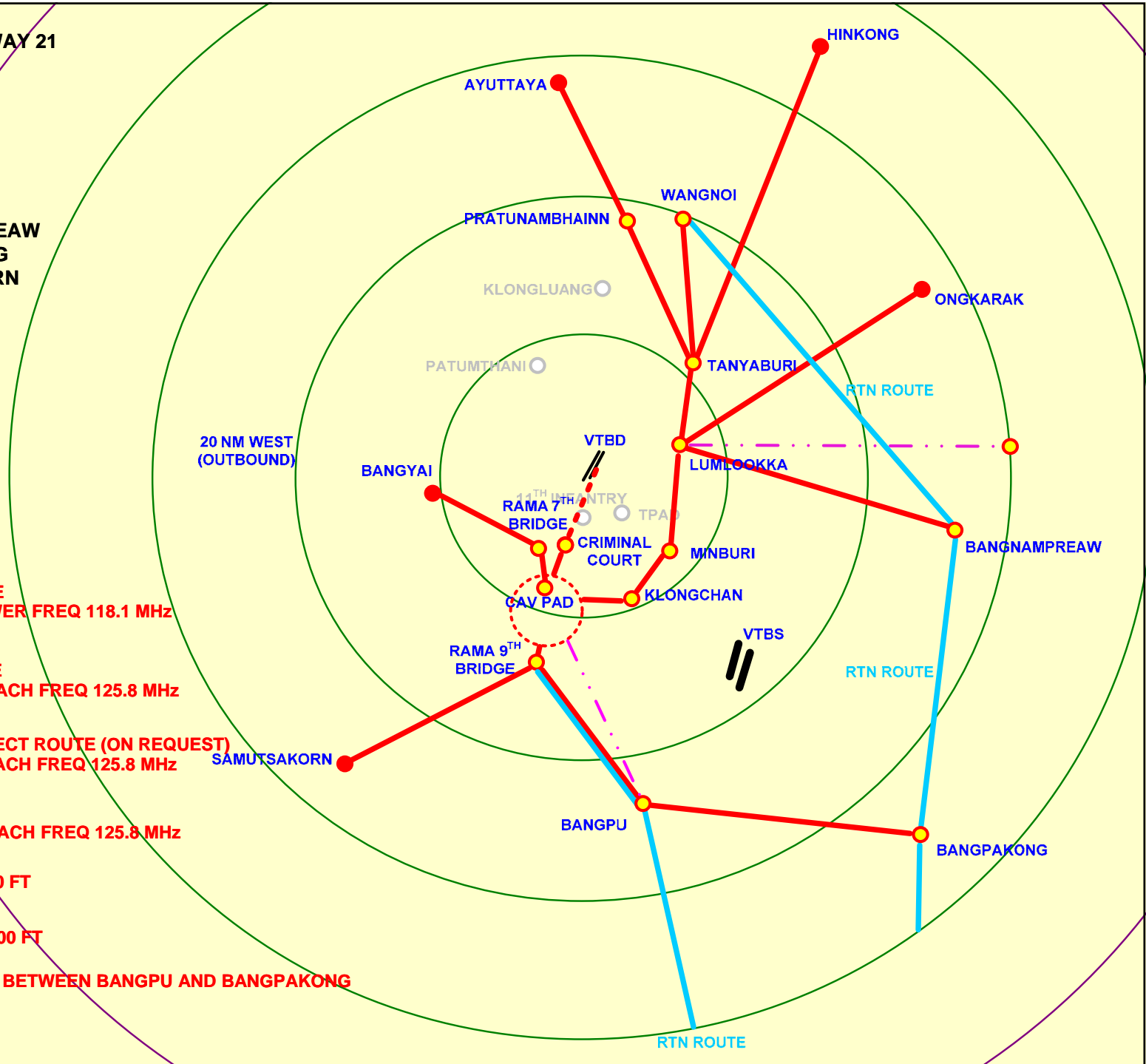
-.-.- ALTERNATIVE DIRECT ROUTE (ON REQUEST)
BANGKOK APPROACH FREQ 125.8 MHz

— RTN ROUTE
BANGKOK APPROACH FREQ 125.8 MHz

○ MAXIMUM ALTITUDE 500 FT

● MAXIMUM ALTITUDE 1000 FT

* FLYING ALONG COAST LINE BETWEEN BANGPU AND BANGPAKONG



DEP/ARR BANGKOK RUNWAY 03

ROUTE

- BANGKOK – AYUTTAYA
- BANGKOK – WANGNOI
- BANGKOK – DONMUAENG
- BANGKOK – HINKONG
- BANGKOK – ONGKARAK
- BANGKOK – BANGNAMPREAW
- BANGKOK – BANGPAKONG
- BANGKOK – SAMUTSAKORN
- BANGKOK – BANGYAI

--- STANDARD ROUTE
DONMUAENG TOWER FREQ 118.1 MHz

— STANDARD ROUTE
BANGKOK APPROACH FREQ 125.8 MHz

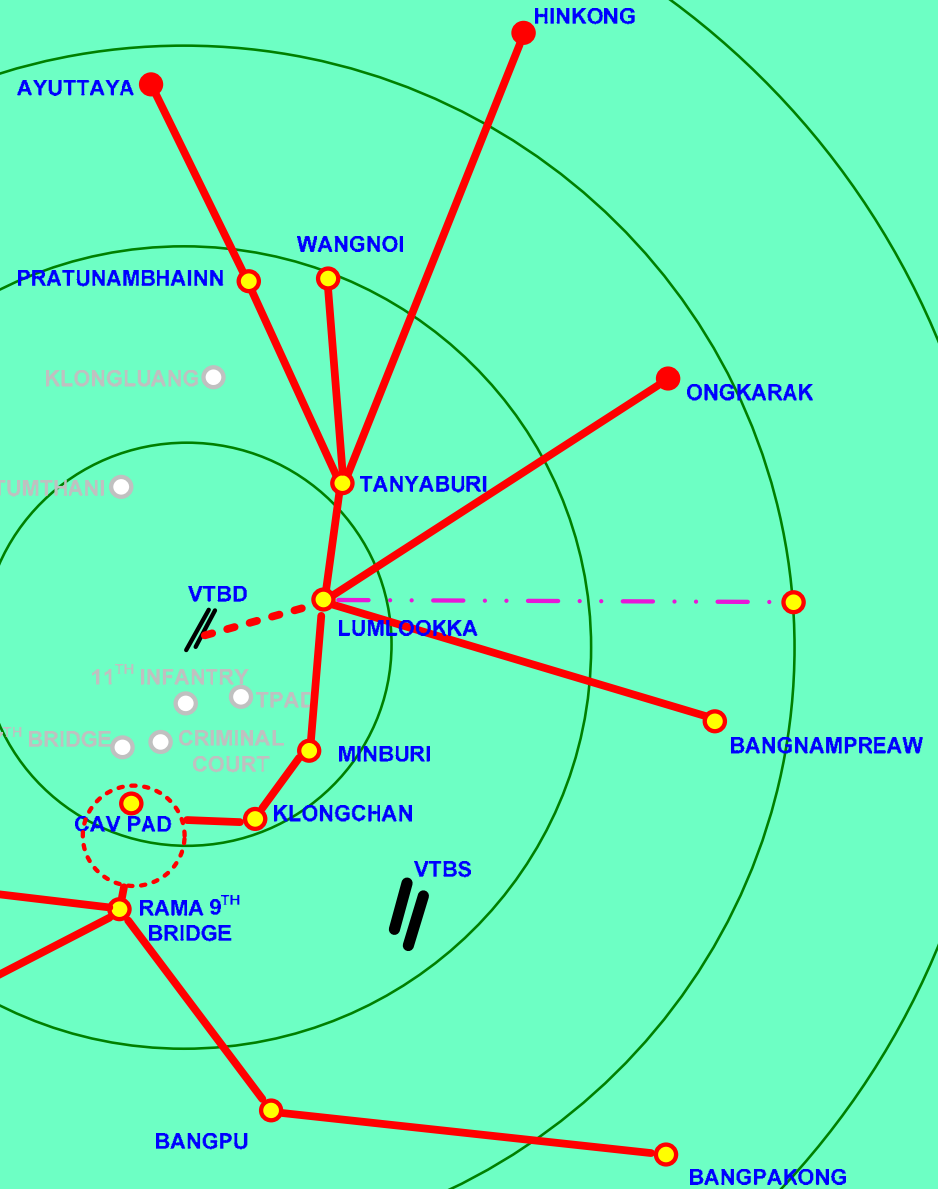
- - - ALTERNATIVE DIRECT ROUTE (ON REQUEST)
BANGKOK APPROACH FREQ 125.8 MHz

○ MAXIMUM ALTITUDE 500 FT

● MAXIMUM ALTITUDE 1000 FT

* FLYING ALONG COAST LINE BETWEEN BANGPU AND BANGPAKONG

20 NM WEST
(OUTBOUND)



DEP/ARR KLONGLUANG RUNWAY 21

ROUTE

- KLONGLUANG – AYUTTAYA
- KLONGLUANG – HINKONG
- KLONGLUANG – ONGKARAK
- KLONGLUANG – BANGNAMPREAW
- KLONGLUANG – BANGPAKONG
- KLONGLUANG – DONMUAENG
- KLONGLUANG – BANGKOK
- KLONGLUANG – PATUMTANI
- KLONGLUANG – SAMUTSAKORN

--- STANDARD ROUTE
DONMUAENG TOWER FREQ 118.1 MHz

— STANDARD ROUTE
BANGKOK APPROACH FREQ 125.8 MHz

-.-.- ALTERNATIVE DIRECT ROUTE (ON REQUEST)
BANGKOK APPROACH FREQ 125.8 MHz

○ MAXIMUM ALTITUDE 500 FT

● MAXIMUM ALTITUDE 1000 FT

20 NM WEST
(OUTBOUND)

SAMUTSAKORN

BANGYAI

PATUMTHANI

AYUTTAYA

KLONGLUANG

PRATUNAMBHANN

WANGNOI

HINKONG

ONGKARAK

VTBD

LUMLOOKKA

11TH INFANTRY

TPAD

RAMA 7TH BRIDGE

CRIMINAL COURT

MINBURI

BANGNAMPREAW

CAV PAD

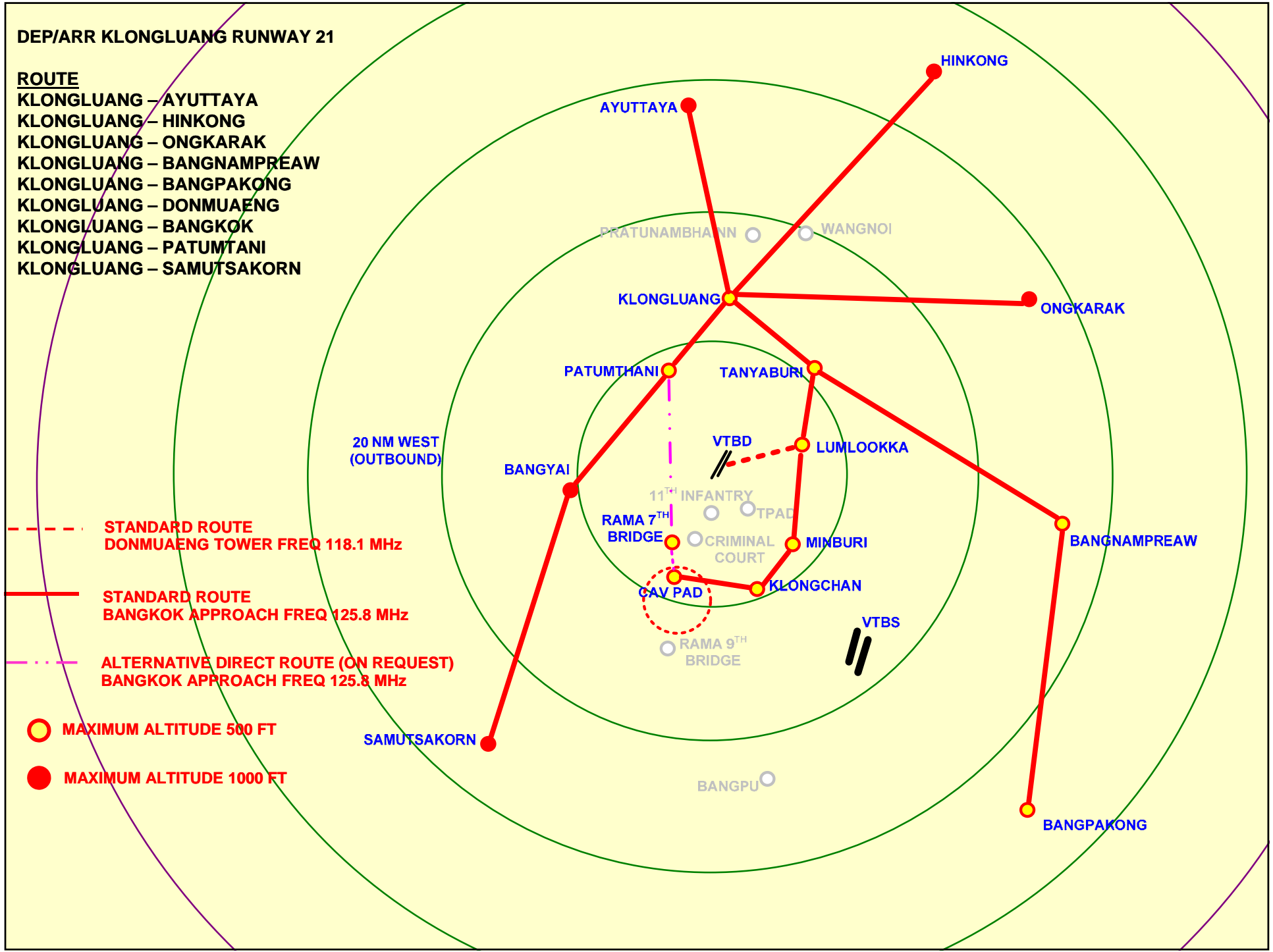
KLONGCHAN

VTBS

RAMA 9TH BRIDGE

BANGPU

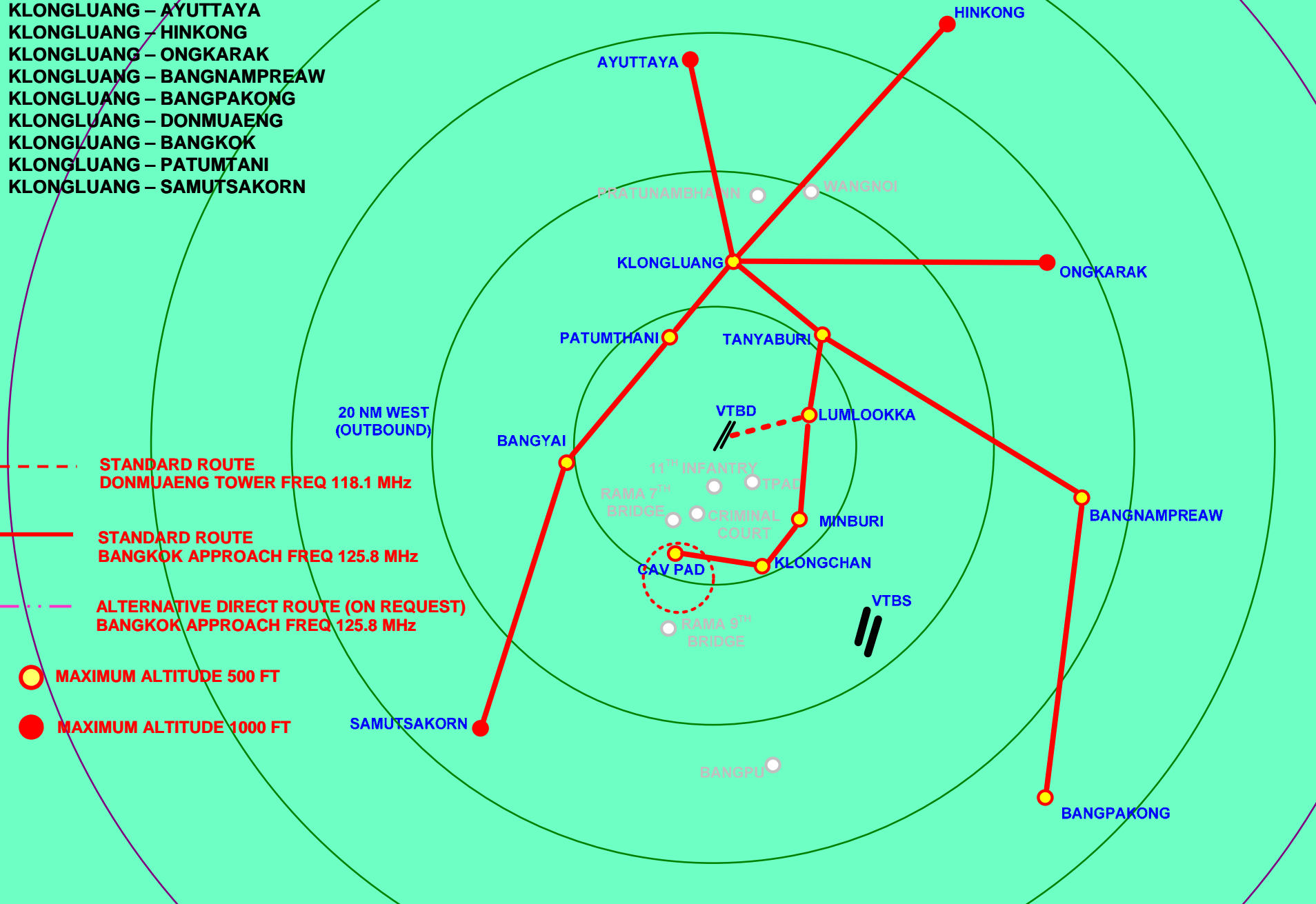
BANGPAKONG

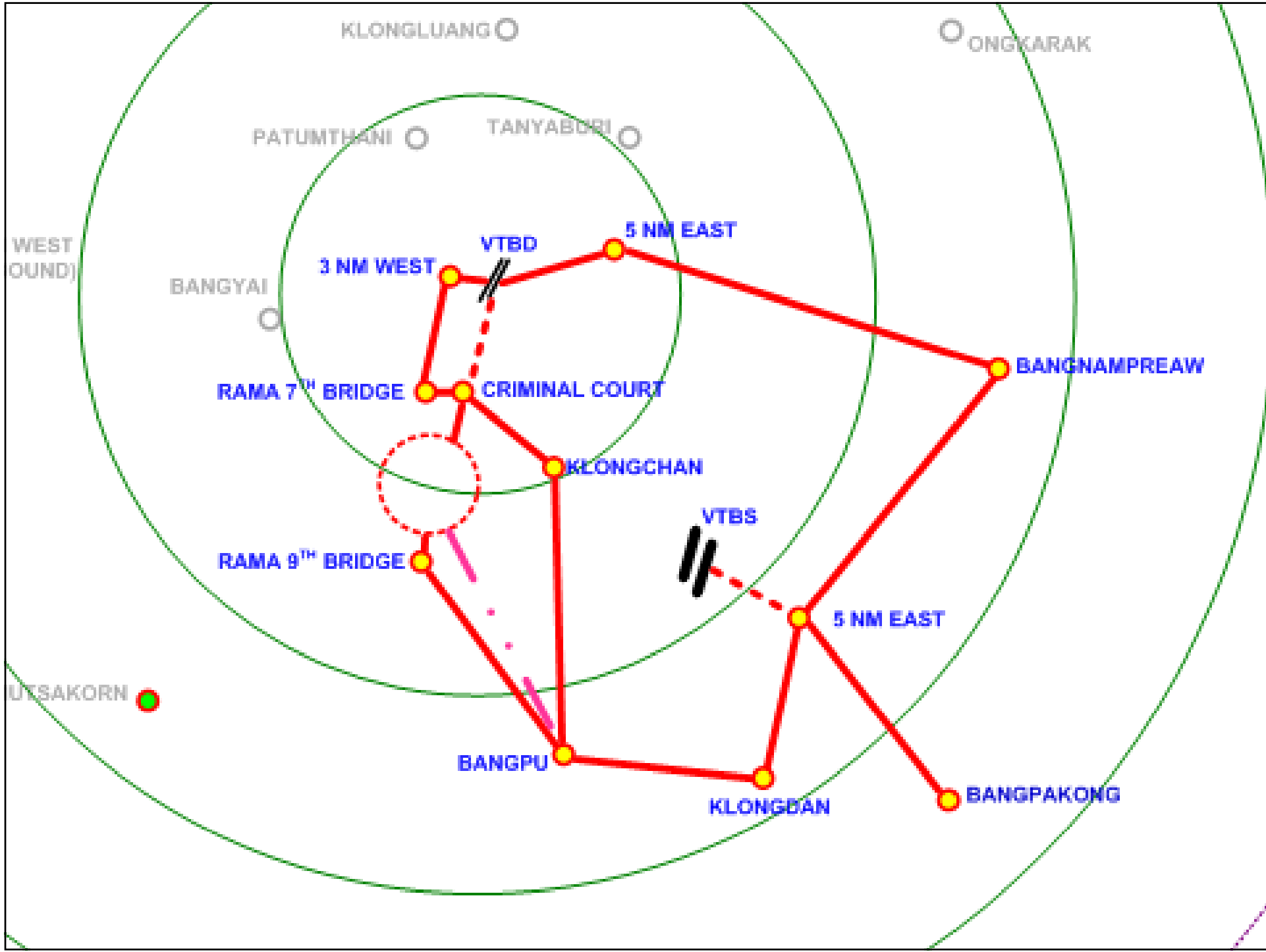


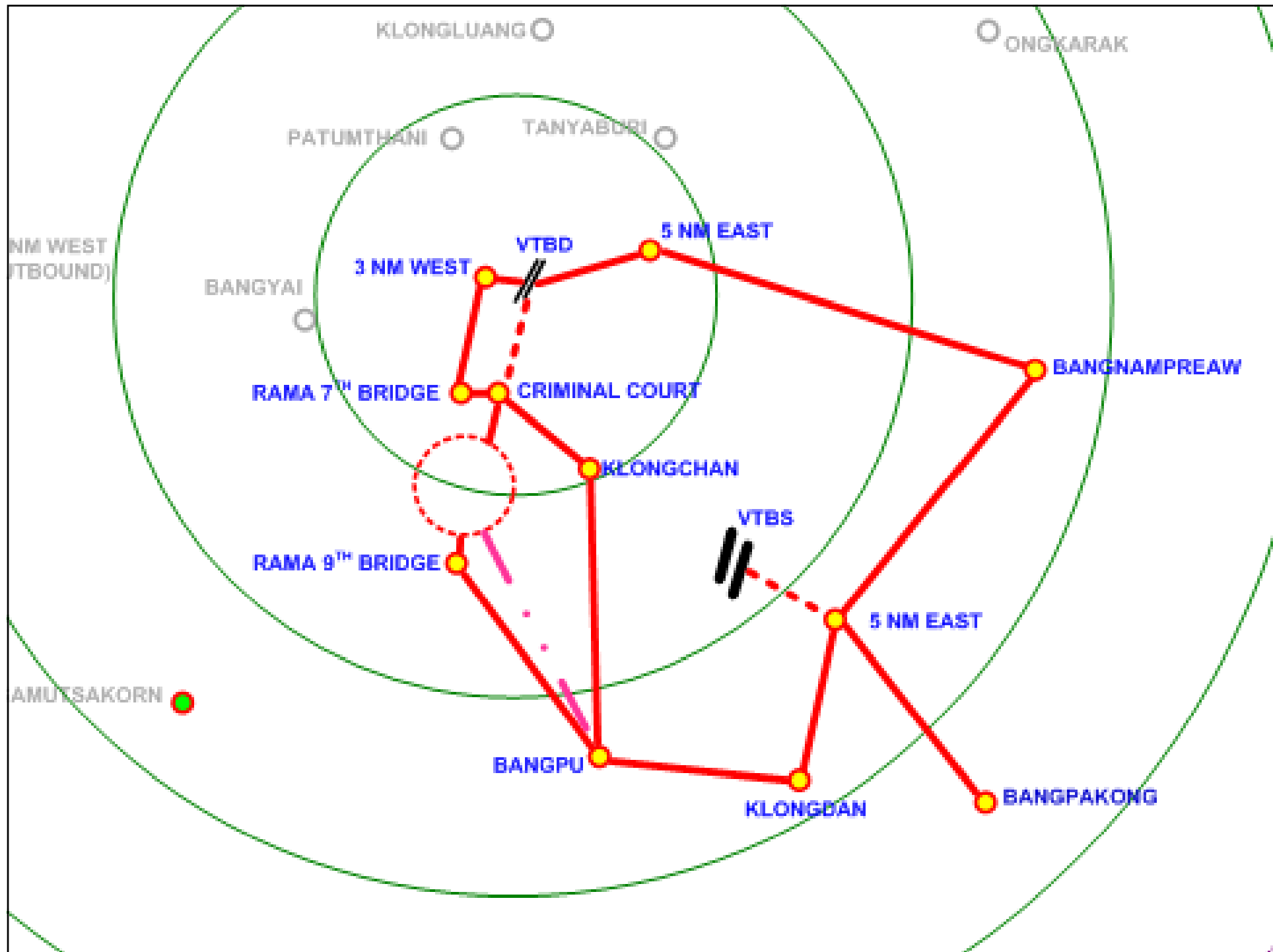
DEP/ARR KLONGLUANG RUNWAY 03

ROUTE

- KLONGLUANG – AYUTTAYA
- KLONGLUANG – HINKONG
- KLONGLUANG – ONGKARAK
- KLONGLUANG – BANGNAMPREAW
- KLONGLUANG – BANGPAKONG
- KLONGLUANG – DONMUAENG
- KLONGLUANG – BANGKOK
- KLONGLUANG – PATUMTANI
- KLONGLUANG – SAMUTSAKORN







การติดต่อสื่อสาร

- การขอคำแนะนำวิ่งขึ้นจาก CAV PAD ให้นักบินติดต่อกับCAV PAD TOWER เพื่อขอคำแนะนำการวิ่งขึ้น และรับทราบ INFORMATION ก่อนทำการวิ่งขึ้น
- หลังจากยกตัวแล้ว ให้นักบินติดต่อ BANGKOK APPROACH ทันที
- ในกรณีที่มี *VIP MOVEMENT* BANGKOK APPROACH หรือ DONMUAENG TOWER จะประสานไปยัง CAV PAD TOWER ให้ทราบล่วงหน้า เพื่อเป็น INFORMATION แก่ักบินที่จะทำการวิ่งขึ้น

การติดต่อสื่อสาร

- ในกรณีที่จะวิ่งขึ้นจาก HELIPAD อื่นๆ และไม่สามารถติดต่อ BANGKOK APPROACH ได้ ให้ใช้การประสานงานทางโทรศัพท์ โดยติดต่อมาที่ APPROACH CONTROL ROOM หรือ DONMUAENG TOWER ก่อนทำการวิ่งขึ้นอย่างน้อย 5 นาที
- HELIPAD ที่อยู่ภายใน DONMUAENG ATZ โทรติดต่อ DONMUAENG TOWER หมายเลขโทรศัพท์ – 02 285 9889, 02 285 9812
- HELIPAD ที่อยู่นอก DONMUAENG ATZ โทรติดต่อ BANGKOK APPROACH หมายเลขโทรศัพท์ – 02 131 3621, 02 287 8473

**REPORTING POINT
FOR
HELICOPTER**

HELICOPTER REPORTING POINTS

	REPORTING POINT	CROSS REFERENCE FROM NAVAID
1	11TH INFANTRY (BANGKHEN)	BKK R178/DME 2.19 NM
2	20 NM WEST (OUTBOUND)	20 NM OUTBOUND FROM BKK DVOR
3	AYUTTAYA	BKK R356/DME 28.32 NM
4	BANGCARE	BKK R240/DME 17.0 NM
5	BANGNAMPREAW	BKK R097/DME 26.4 NM
6	BANGPAKONG	BKK R137/DME 34.3 NM
7	BANGPU	BKK R170/DME 23.1 NM
8	BANGYAI	BKK R266/DME 10.56 NM
9	CAVPAD	BKK R201/DME 7.55 NM
10	CRIMINAL COURT	BKK R193/DME 4.57 NM
11	MINBURI	BKK R130/DME 6.3 NM
12	HINKONG	BKK R028/DME 34.86 NM
13	KLONGCHAN	BKK R167/DME 8.09 NM
14	KLONGLUANG	BKK R005/DME 13.61 NM
15	LUMLOOKKA	BKK R070/DME 7.42 NM
16	ONGKARAK	BKK R060/DME 27.11 NM
17	PATUMTHANI	BKK R341/DME 8.74 NM
18	PRATUNAMBHAINN	BKK R008/DME 18.60 NM
19	RAMA 7 BRIDGE	BKK R224/DME 6.07 NM
20	RAMA 9 BRIDGE	BKK R193/DME 12.91 NM
21	SAMUTSAKORN	BKK R221/DME 27.48 NM
22	TANYABURI	BKK R042/DME 10.93 NM
23	TPAD	BKK R131/DME 2.98 NM
24	WANGNOI	BKK R020/DME 20.0 NM

5 NM EAST



KLONGCHAN



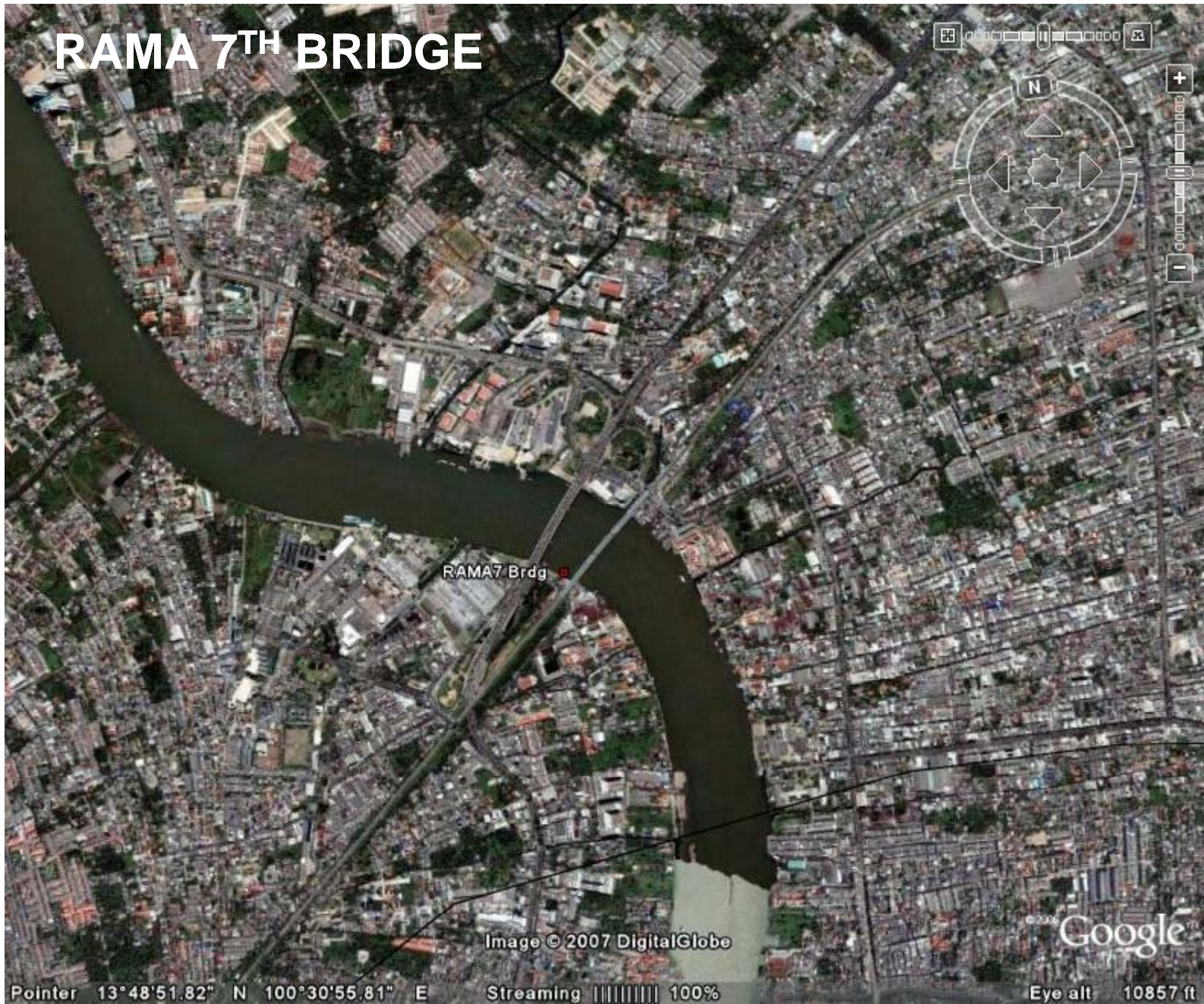
Image © 2007 DigitalGlobe

© 2006 Google

Pointer 13°45'20.41" N 100°37'26.65" E Streaming ||||| 100%

Eye alt 6465 ft

RAMA 7TH BRIDGE



RAMA7 Brdg

Image © 2007 DigitalGlobe

Pointer 13°48'51.82" N 100°30'55.81" E

Streaming ||||| 100%

Eye alt 10857 ft

Google

RAMA 9TH BRIDGE



Image © 2007 DigitalGlobe

© 2006 Google

Pointer 13°40'50.14" N 100°31'25.68" E Streaming ||||| 100% Eye alt 20404 ft

CRIMINAL COURT



THANYABURI

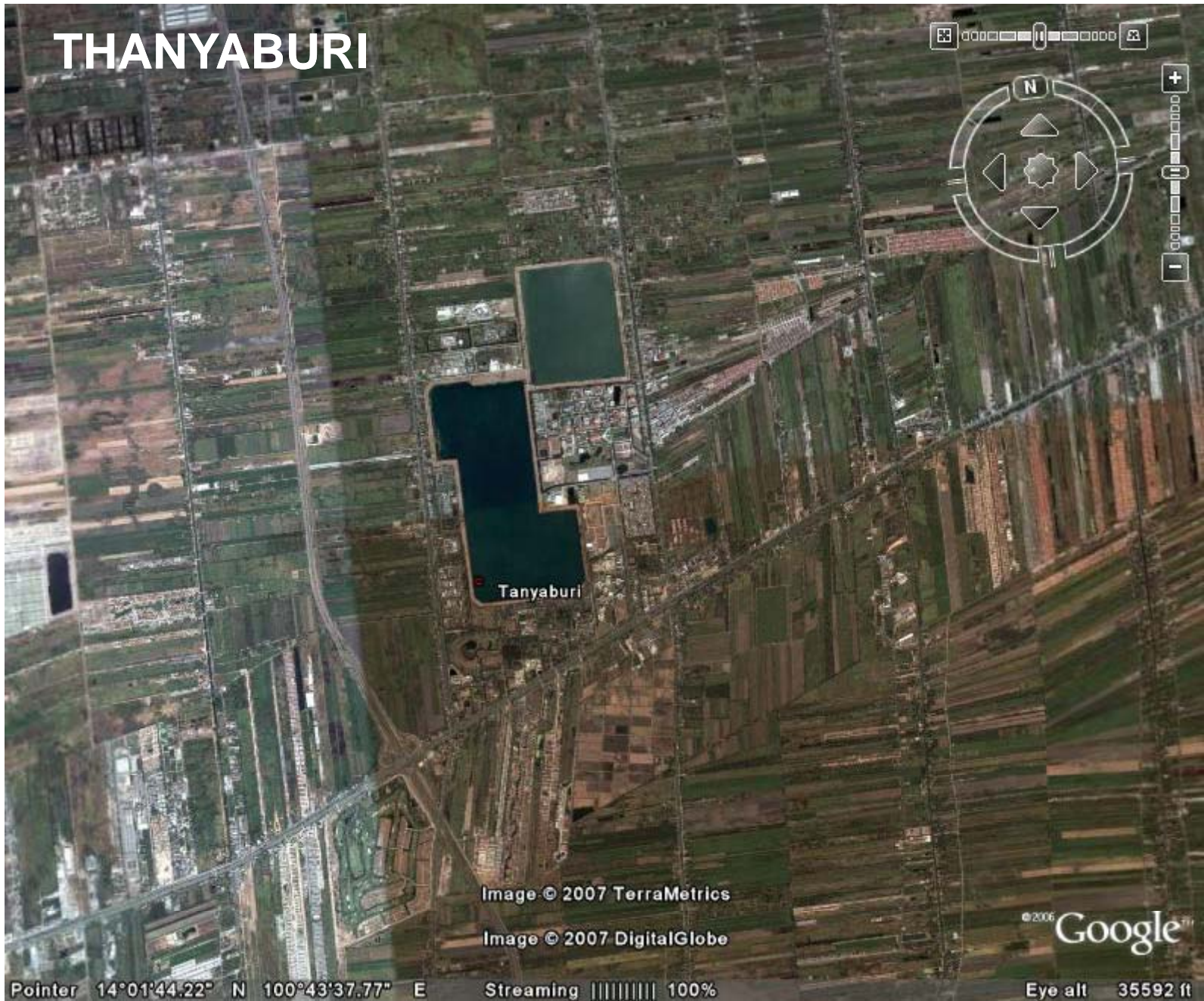


Image © 2007 TerraMetrics

Image © 2007 DigitalGlobe

©2006 Google

Pointer 14°01'44.22" N 100°43'37.77" E Streaming ||||| 100% Eye alt 35592 ft

FASHION ISLAND



Image © 2007 DigitalGlobe

© 2006 Google

Pointer 13°49'21.91" N 100°40'32.21" E Streaming ||||| 100% Eye alt 9281 ft

BANGYAI



Bangyai

Image © 2007 DigitalGlobe

©2006 Google

Pointer 13°52'19.83" N 100°24'55.45" E

Streaming ||||| 100%

Eye alt 10019 ft

PRATUMTHANI



Image © 2007 DigitalGlobe

Google

Pointer 14°01'26.73° N 100°32'30.21° E

Streaming ||||| 100%

Eye alt 10319 ft

PRATUNAMBHAINN

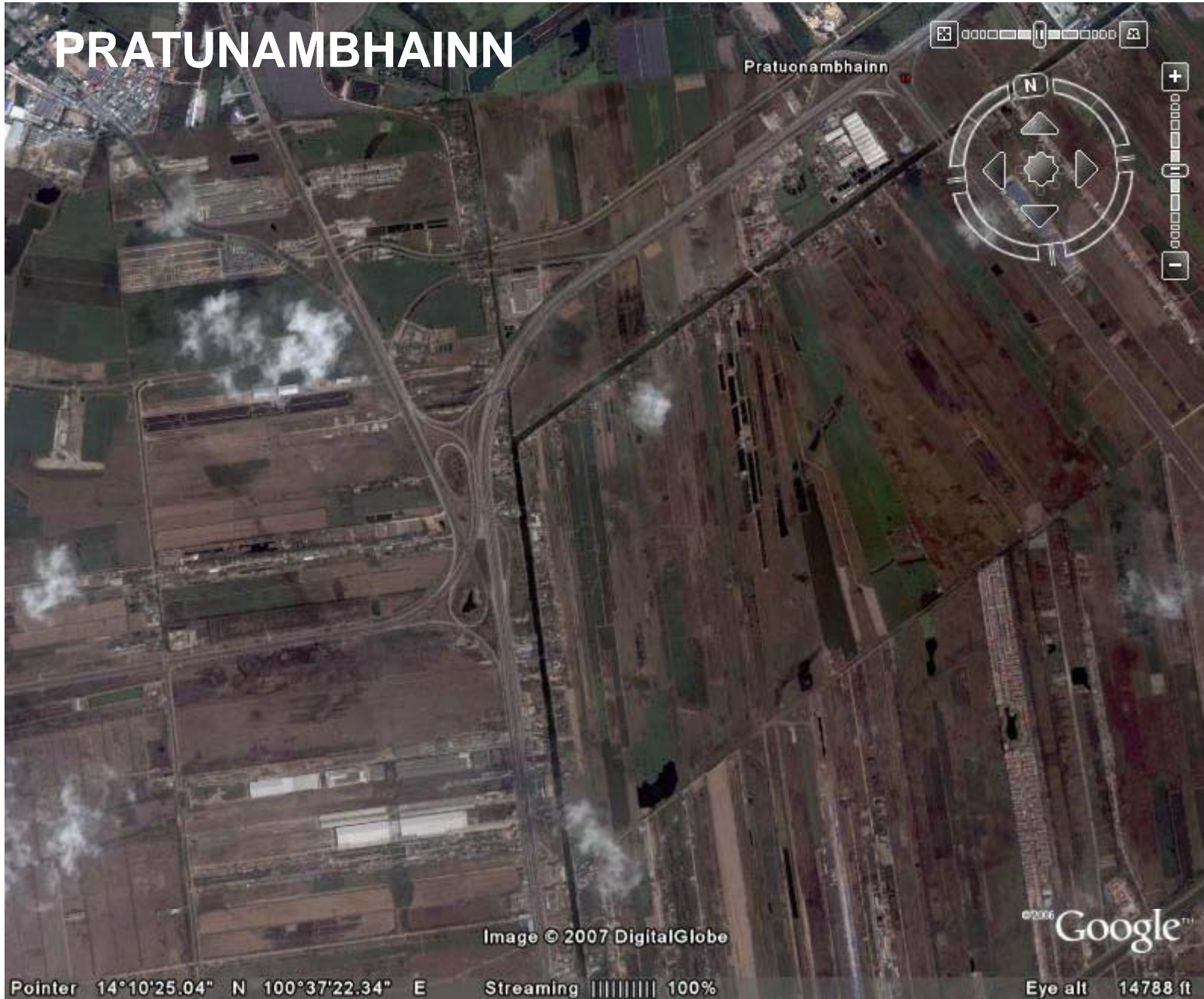


Image © 2007 DigitalGlobe

©2006 Google™

Pointer 14°10'25.04" N 100°37'22.34" E

Streaming ||||| 100%

Eye alt 14788 ft

AYUTTAYA



Ayuttaya

Image © 2007 DigitalGlobe

© 2006 Google™

Pointer 14°20'59.04" N 100°35'09.36" E Streaming 1% Eye alt 5872 ft

SOUTHERN BUS TERMINAL


Southern Bus Terminal 



Image © 2007 DigitalGlobe

Pointer 13°46'41.29" N 100°28'30.59" E

Streaming ||||| 100%

Google
Eye alt 7840 ft

SAMUTSAKORN



Pointer 13°31'48.42" N 100°17'08.14" E Streaming ||||| 100% Eye alt 10.92 mi





Pointer 13°30'35.12" N 100°39'25.19" E Streaming ||||| 100%



บางน้ำเปรี้ยว



Bangnam Preaw

Image © 2007 DigitalGlobe

© 2006 Google™

Pointer 13°49'45.74" N 101°01'33.69" E Streaming ||| ||| ||| 100% Eye alt 33730 ft